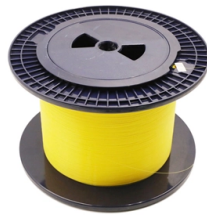


South African tariff costs cybersecurity equipment 800G



Overview

Use this free calculator to estimate the customs duty, VAT, and total landing cost of importing goods into South Africa. Select your product category, enter the CIF value, and see a breakdown of all duties and taxes. Covers common product categories, trade agreement concessions, and the R500 de. The SARS Tariff Determination enhancement project, which includes the publication of Tariff Determinations is divided into two phases: the first phase involves the online processing, issuing and publication of new applications by relevant internal users only, the publication will exclude old cases. Tariff rates are detailed on the South African Revenue Service side at <https://www.za/customs-and-excise/tariff/> Complexity South Africa reformed and simplified its tariff structure in 1994. Tariff rates have been reduced from a simple average of more than 20 percent to an average of 7. 1. When you import products, the South African Revenue Service (SARS) classifies your goods according to the Harmonised System (HS) tariff code and applies a duty rate based on that classification. Want to save time?

Ship it with us today?

When shipping a package internationally from, your shipment may be subject to a custom duty and import tax.

Article Content

Import Duty Tax Calculator South Africa

Calculate import duty and taxes in South Africa with ease using our shein tax calculator. It avoids unexpected costs and ensure smooth clearance.

Tariffs - The Department of Trade Industry and Competition

Customs tariff investigations, trade remedies and import and export control falls within the domain of the International Trade Administration Commission of South Africa (ITAC).

Tariff | South African Revenue Service

All import and export commercial transactions require commodities on Customs declarations to be classified according to an appropriate tariff heading. The tariff classification code is ...

Import Duty Calculator South Africa

Use this free calculator to estimate the customs duty, VAT, and total landing cost of importing goods into South Africa. Select your product category, enter the CIF value, and see a breakdown of all duties ...

Import Duty Calculator South Africa | Customs & VAT | JLog

Calculate South African import duties and VAT instantly. Enter your CIF value and product category to estimate customs duty, VAT, and total landing cost.

JET Customs Tariff | Computer Freight Systems

Launched in 1989 as the first digital customs tariff in SA, JET continues to set the standard for reliability, simplicity, and performance-trusted globally by professionals of all levels.

South Africa Import Duty And Taxes Calculator From United States

Free South Africa tariff calculator and customs duty calculator. Estimate import tax, import duties, customs fees, and South Africa import duty rates instantly.

VAT & Import Duty Calculator

Estimate the VAT and import duty you will pay on goods entering South Africa with our free VAT & Import Duty Calculator. This tool helps you calculate SARS taxes based on your goods' FOB value ...

Import duty directory and calculation

The rates of duty applicable to imported goods are listed in the South African tariff book according to tariff (HS) code. Use this import duty and levy directory to determine the rates of duty applicable to ...

South Africa

Includes information on average tariff rates and types that U.S. firms should be aware of when exporting to the market.

Contact Us

For more information, pricing, or custom solutions, please contact us:

Website: <https://mastercarpetsandflooring.co.za>

Email: info@mastercarpetsandflooring.co.za

Phone: +27 82 547 3961

Address: 21 Maxwell Drive, Woodmead, Sandton, 2191, South Africa

This document is for informational purposes only. Specifications subject to change without notice.

